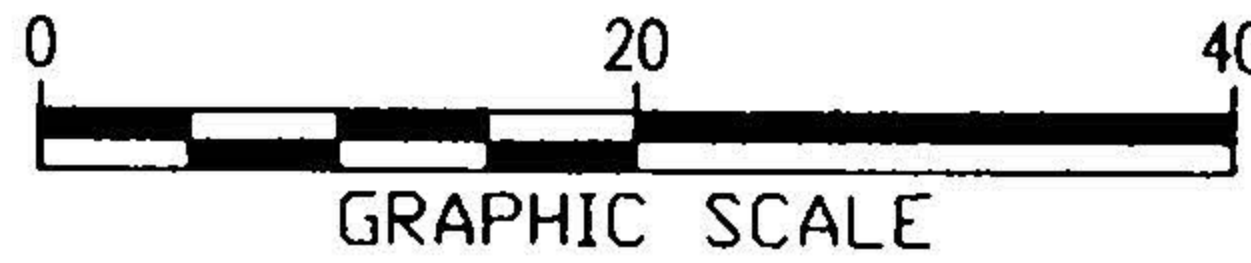
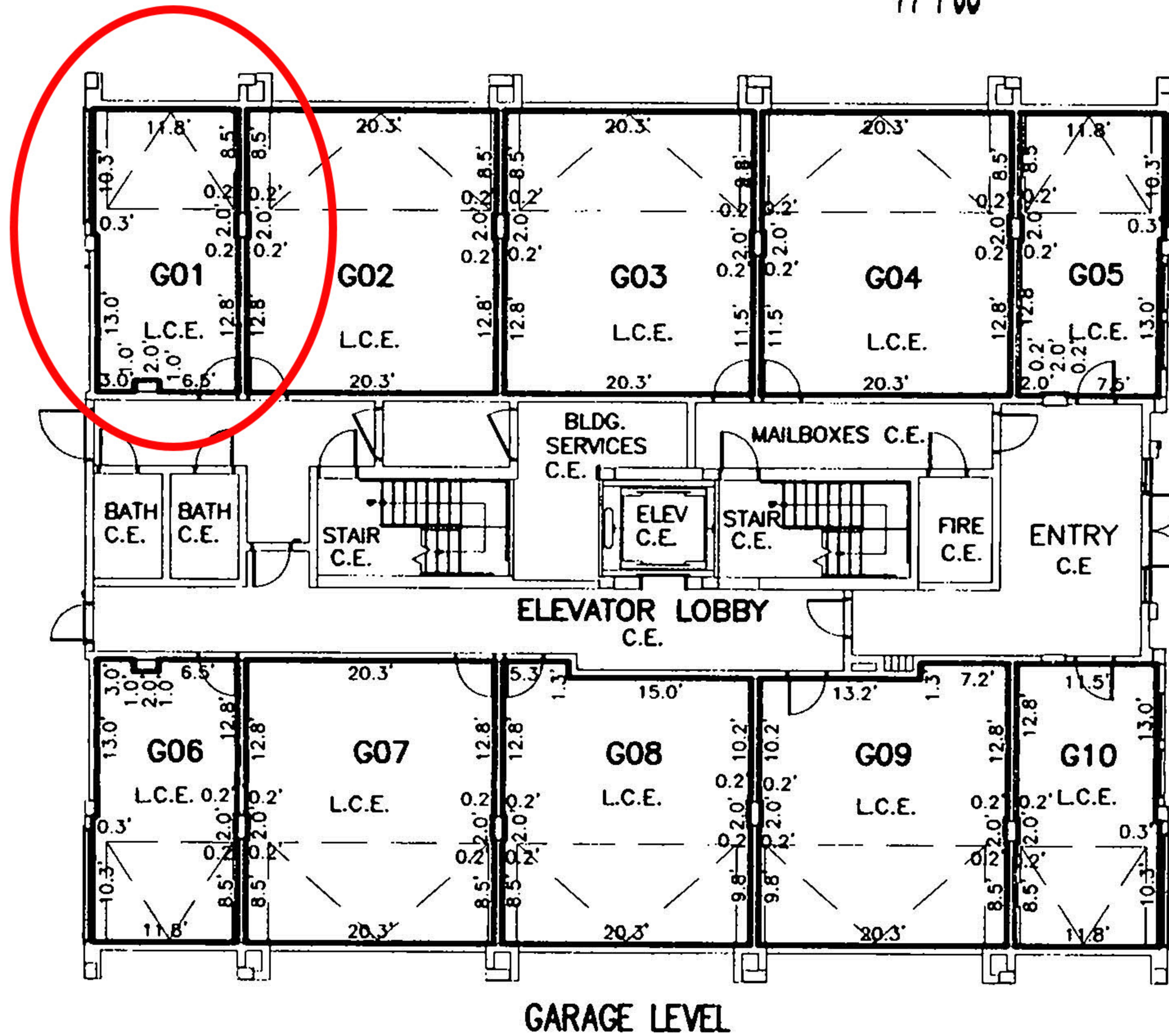
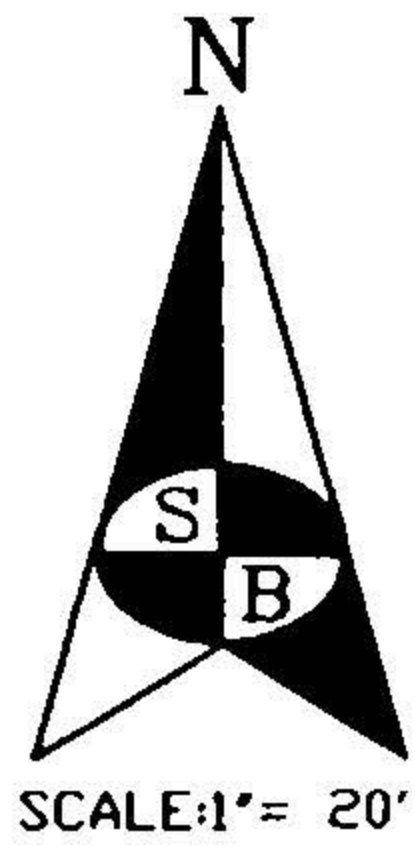


EXHIBIT B

INSTRUMENT # 2004231468
77 PGS



GENERAL NOTES

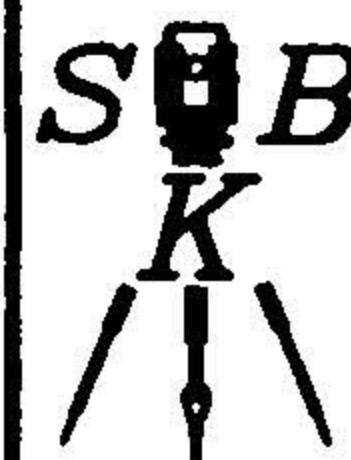
- DIMENSIONS ARE IN FEET AND DECIMALS THEREOF.
- REFER TO THE DECLARATION OF CONDOMINIUM FOR DEFINITION AND DESIGNATION OF THE UNIT BOUNDARY, LIMITED COMMON ELEMENT (L.C.E.), COMMON ELEMENT (C.E.), AND OPEN SPACE.
_____ INDICATES UNIT BOUNDARY.
- EVERYTHING EXTERIOR TO THE UNITS ARE COMMON ELEMENTS UNLESS OTHERWISE DENOTED.
- INTERIOR WALL CONFIGURATION MAY VARY FROM THE GRAPHIC DEPICTION HEREON.
- DIMENSIONS SHOWN HEREON ARE BASED ON DESIGN DISTANCES UNLESS OTHERWISE SHOWN.
- THIS EXHIBIT WAS PREPARED WITH THE USE OF ARCHITECTURAL PLANS PREPARED BY LAWSON GROUP, INC., SARASOTA, FLORIDA, REVISION DATE 7/08/04.

ABBREVIATIONS

- A/C = AIR CONDITIONER
BLDG = BUILDING
(C) = CALCULATED DIMENSION
C.A. = COMMON AREA
C.E. = COMMON ELEMENT
C.L.C.E. = COMMERCIAL L.C.E.
CONC = CONCRETE
CORR = CORRIDOR
CU = DESIGNATES COMMERCIAL UNITS
ELEV. = ELEVATOR
EL = ELEVATION
L# = SEE LINE TABLE
L.C.E. = LIMITED COMMON ELEMENT
MECH = MECHANICAL
NGVD = NATIONAL GEODETIC VERTICAL DATUM 1929
P# = PARKING SPACE (L.C.E.)
R.L.C.E. = RESIDENTIAL L.C.E.
RM. = ROOM
RU = DESIGNATES RESIDENTIAL UNITS
S# = STORAGE SPACE (L.C.E.)
UTIL = UTILITY
□ = STRUCTURAL MEMBER (C.E.)

CONDOMINIUM DOCS FOR: MAJESTIC BAY OF SARASOTA, L.L.C.

MAJESTIC BAY, A CONDOMINIUM
EXHIBIT B TO THE DECLARATION OF CONDOMINIUM
GARAGE LEVEL BOUNDARY DETAIL
SARASOTA COUNTY, FLORIDA



Sampey, Burchett and Knight, Inc.
Professional Surveyors & Mappers
1588 Global Court
Sarasota, Florida 34240
Phone: 941-342-0349
Fax: 941-342-7490
LB No.: 7009

JOB NUMBER	REVISION	SECTION	TOWNSHIP	RANGE	SCALE	DATE	DRAWN BY	FILE NAME	SHEET
03-062		24	36	17	1" = 20'	11/04	ALM	03-062CD	6 OF 16